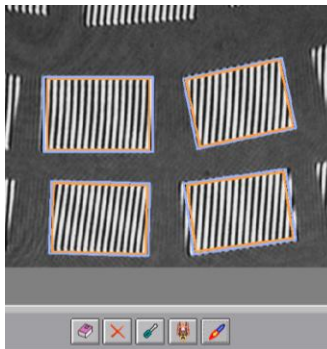


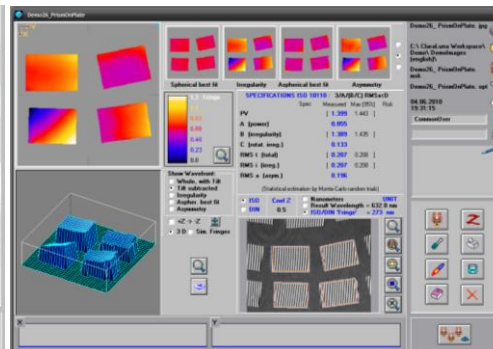
# PI500

## Plano Interferometer

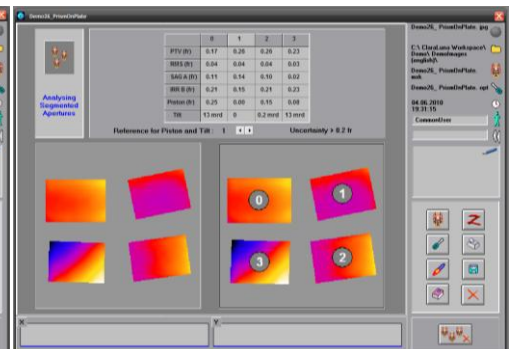
- + precise vertical interferometer station for optical workshops
- + pneumatic table for easy and precise work piece movement
- + vibration damping system for perfect usage in production environment
- + granite portal with highly precise surface for accurate measurements
- + equipped with cost efficient *MPF-Systems 4" Fizeau Interferometer* with 6x optical zoom
- + innovative fringe analysing software for automatic selection, masking and measurement of multiple individual components on blocks



automatic detection and masking of visible elements



Fringe analyzing of all fully visible components



Automatic numbering and analyzing of all individual surfaces. Single surface documentation in table

### Technical Data:

#### Dimensions (WxDxH)

800x1300x2000mm (additional space required when PC is used for fringe analyses)

#### Weight

approx. 750kg

#### Connections

Voltage: 220-110V / 50-60Hz / 16A, pressure air: 6 bar

#### Paint

Light grey RAL7035

fineoptix GmbH + Schmalheck 18 + 35625 Hüttenberg + Germany

Tel.: +49-6441-210 49 10 + Fax: +49-6441-210 49 11

mpf@fineoptix.com + www.mpf-systems.com